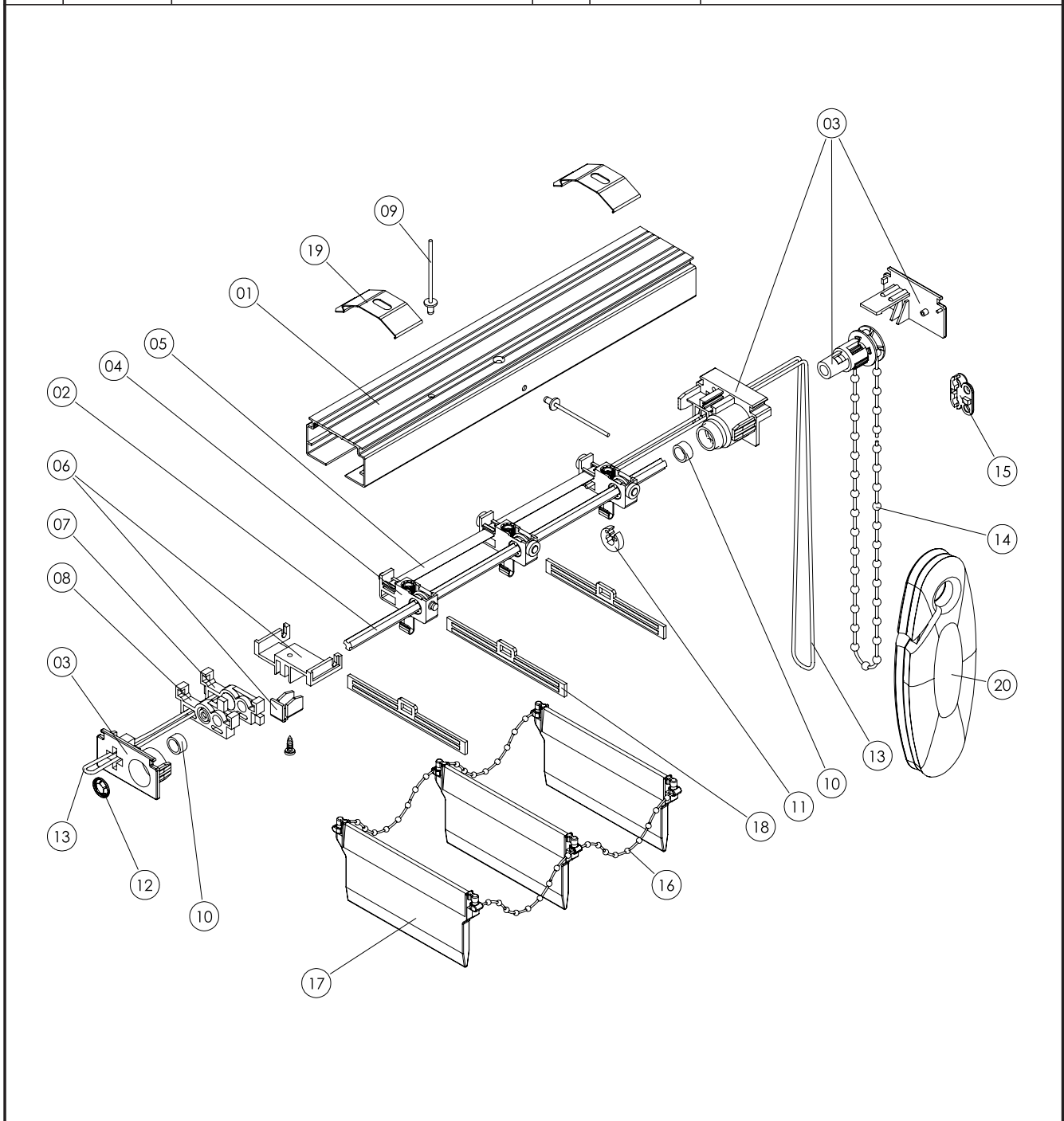
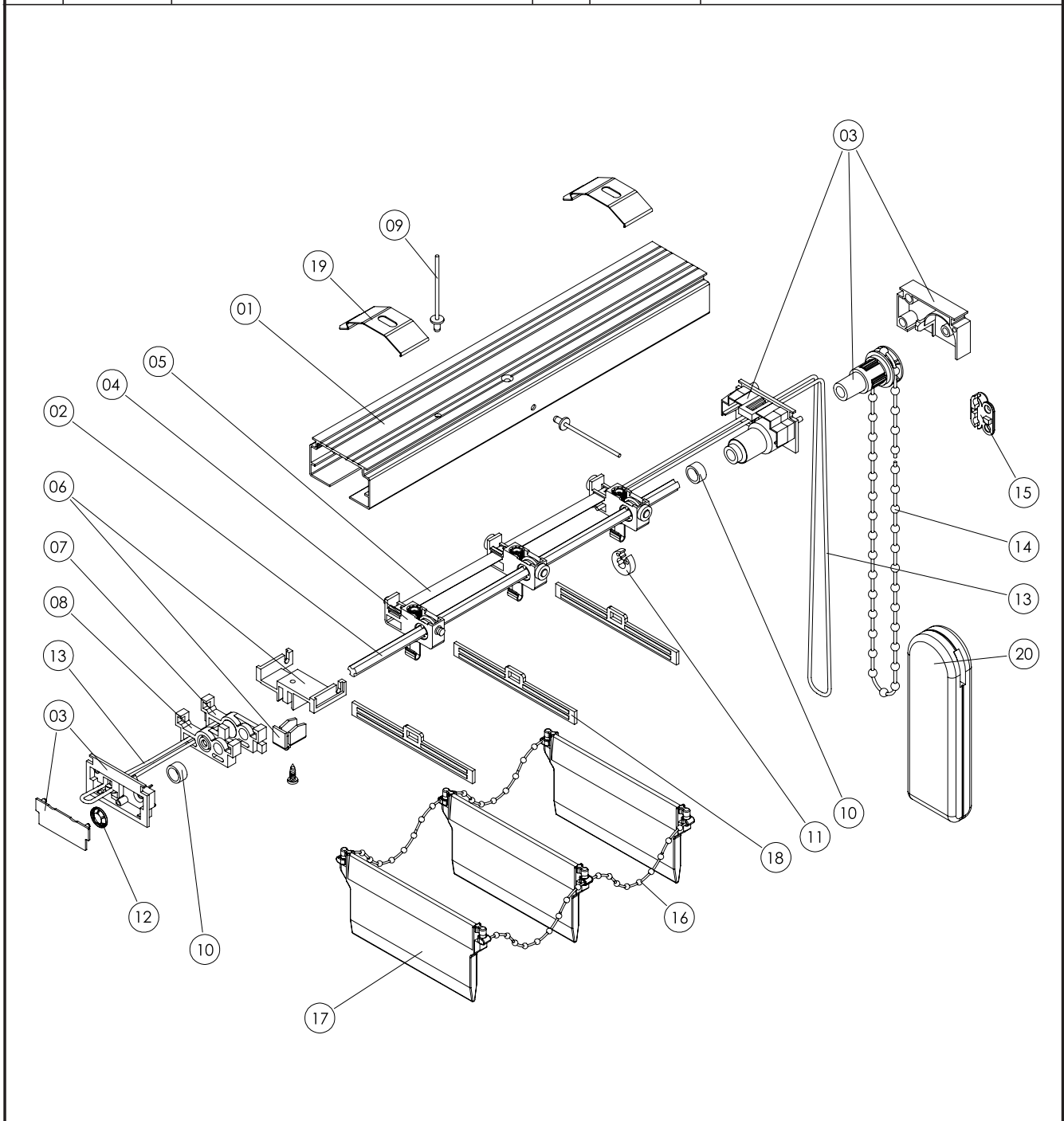
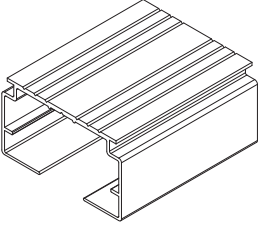
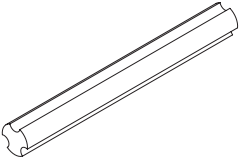
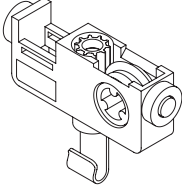
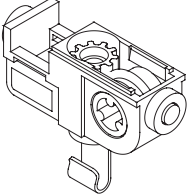
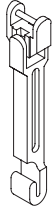
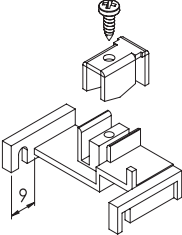
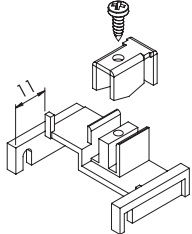


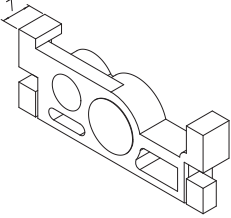
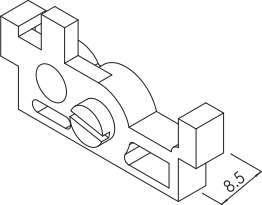
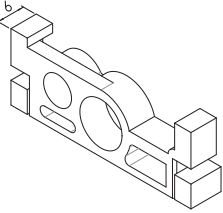
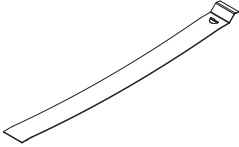
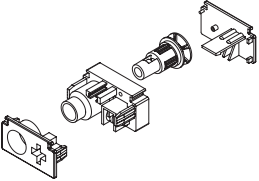
| Nr.<br>No.<br>Code | Artikelnr.<br>Article No.<br>Code Article | Artikelbezeichnung<br>Designation<br>Désignation          | Nr.<br>No.<br>Code | Artikelnr.<br>Article No.<br>Code Article | Artikelbezeichnung<br>Designation<br>Désignation          |
|--------------------|---|---|--------------------|---|---|
| 01                 | 3.233 770 001                             | Laufschiene / Headrail / Boitier                          | 11                 | 3.233 240 000                             | Stopping / Stop ring / Bague d'arrêt                      |
| 02                 | 3.233 671 000                             | Wendeachse / Tilt shaft / Axe d'orientation               | 12                 | 3.233 215 000                             | Fächerfeder / Retaining washer / Bague de fixation        |
| 03                 | 3.231 152 001                             | Bedieneinheit / Operating unit /<br>Unité de commande     | 13                 | 3.224 505 001                             | Zugschnur / Pull cord / Cordon                            |
| 04                 | 3.230 184 000                             | Laufwagen / Runner / Chariot                              | 14                 | 3.233 227 001                             | Bedienkette / Operating chain /<br>Chainette de commande  |
| 05                 | 3.230 068 000                             | Abstandshalter / Louver spacer / Écarteur                 | 15                 | 3.232 129 001                             | Kettenverbinder / Ball chain connector / Joint de chaîne  |
| 06                 | 3.231 111 000                             | Schnurzugwagen / Cord drive runner /<br>Chariot de tirage | 16                 | 3.233 226 001                             | Abstandskette / Bottom chain / Chainette du bas           |
| 07                 | 3.230 167 000                             | Wellenstütze / Shaft support / Support d'arbre            | 17                 | 3.233 225 001                             | Beschwerungsplatte / Bottom weight /<br>Plaque de lestage |
| 08                 | 3.233 024 000                             | Wellenstütze / Shaft support / Support d'arbre            | 18                 | 3.230 199 000                             | Lamellenhalter / Slat holder / Support lamelle            |
| 09                 | 3.002 000 121                             | Blindniete / Blind rivet / Rivet                          | 19                 | 3.230 176 001                             | Montageclip / Fixing clip / Clip de montage               |
| 10                 | 3.233 238 XXX                             | Distanzrohr / Spacer tube / Tube de distance              | 20                 | 3.230 195 001                             | Schnurbeschwerer / Cord Weight / Poids de Cordon          |

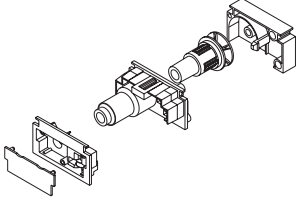
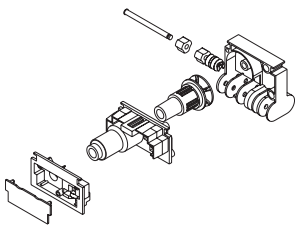
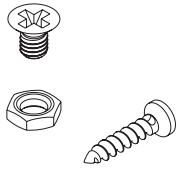
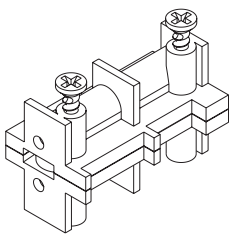
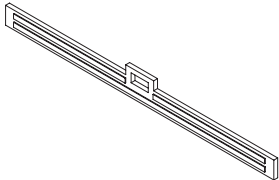
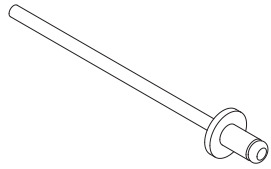


| Nr.<br>No.<br>Code | Artikelnr.<br>Article No.<br>Code Article | Artikelbezeichnung<br>Designation<br>Désignation       | Nr.<br>No.<br>Code | Artikelnr.<br>Article No.<br>Code Article | Artikelbezeichnung<br>Designation<br>Désignation         |
|--------------------|---|--|--------------------|---|--|
| 01                 | 3.233 770 001                             | Laufschiene / Headrail / Boitier                       | 12                 | 3.233 215 000                             | Fächerfeder / Retaining washer / Bague de fixation       |
| 02                 | 3.233 671 000                             | Wendeachse / Tilt shaft / Axe d'orientation            | 13                 | 3.224 505 001                             | Zugschnur / Pull cord / Cordon                           |
| 03                 | 3.233 201 001                             | Endkappenset / End cap set / Jeu d'embout              | 14                 | 3.233 227 001                             | Bedienkette / Operating chain / Chainette de commande    |
| 04                 | 3.230 184 000                             | Laufwagen / Runner / Chariot                           | 15                 | 3.232 129 001                             | Kettenverbinder / Ball chain connector / Joint de chaine |
| 05                 | 3.230 186 139                             | Abstandshalter / Louver spacer / Écarteur              | 16                 | 3.233 226 001                             | Abstandskette / Bottom chain / Chainette du bas          |
| 06                 | 3.231 111 000                             | Schnurzugwagen / Cord drive runner / Chariot de tirage | 17                 | 3.233 225 001                             | Beschwerungsplatte / Bottom weight / Plaque de lestage   |
| 07                 | 3.230 167 000                             | Wellenstütze / Shaft support / Support d'arbre         | 18                 | 3.230 199 000                             | Lamellenhalter / Slat holder / Support lamelle           |
| 08                 | 3.233 024 000                             | Wellenstütze / Shaft support / Support d'arbre         | 19                 | 3.230 176 001                             | Montageclip / Fixing clip / Clip de montage              |
| 09                 | 3.002 000 121                             | Blindniete / Blind rivet / Rivet                       | 20                 | 3.230 174 000                             | Schnurbeschwerer / Cord weight / Poids de cordon         |
| 10                 | 3.233 238 XXX                             | Distanzrohr / Spacer tube / Tube de distance           |                    |   |  |
| 11                 | 3.233 240 000                             | Stopping / Stop ring / Bague d'arrêt                   |                    |   |  |



| Abbildung<br>Illustration<br>Illustration   | Artikelnr.<br>Article No.<br>Code Article | Artikelbezeichnung<br>Designation<br>Désignation  | Packeinheit<br>Packing Unit<br>Conditionnement                                 |
|---|---|---|--|
|    | 3.233 770<br><br>-001<br>-058             | COMPACT-LAUFSCIENE, 44,5x25 mm Aluminium<br>COMPACT-HEADRAIL, 44,5x25 mm aluminium<br>BOITIER COMPACT, 44,5x25 mm aluminium<br><br>weiß / white / blanc<br>eloxiert / anodized / anodisé  | 70 m<br>70 m<br>70 m   |
|    | 3.233 671 000                             | WENDEACHSE, Aluminium, 6 mm, 3 Kant<br>TILT SHAFT, aluminium, 6 mm, 3 edged<br>AXE D'ORIENTATION, aluminium, 6 mm, 3 pans   | Längen à 7 m<br>lengths of 7 m<br>longueurs de 7 m<br><br>70 m<br>70 m<br>70 m |
|   | 3.230 184 000                             | LAUFWAGEN, 8,5 mm für 3-Kant Wendeachse<br>RUNNER, 8,5 mm, for 3 edged shaft<br>CHARIOT, 8,5 mm, pour axe 3 pans  | 1.000 Stck<br>1.000 pcs<br>1.000 pcs   |
|  | 3.230 079 000                             | SLOPELAUFWAGEN, 11 mm, ohne Slope-Haken, für 3-Kant Wendeachse<br>SLOPE RUNNER, 11 mm, without slope hook, for 3 edged shaft<br>CHARIOT SLOPE, sans crochet slope, pour axe 3 pans        | 1.000 Stck<br>1.000 pcs<br>1.000 pcs   |
|  | 3.230 079<br><br>-035<br>-043<br>-048     | SLOPEHAKEN, für Laufwagen 3.230.079.000<br>SLOPE HOOK, for runner 3.230.079.000<br>CROCHET SLOPE, pour chariot 3.230.079.000<br><br>35°<br>43°<br>48°                                     | 200 Stck<br>200 pcs<br>200 pcs   |
|  | 3.231<br><br>-111 000<br>-116 000         | SCHNURZUGWAGEN, für 8,5 mm Laufwagen<br>CORD DRIVE RUNNER, for carrier 8,5 mm<br>CHARIOT DE TIRAGE DU CORDON, pour chariot 8,5 mm<br><br>rechts / right / droite<br>links / left / gauche | 100 Stck<br>100 pcs<br>100 pcs   |
|  | 3.231<br><br>-117 000<br>-118 000         | SCHNURZUGWAGEN, für Slope-Laufwagen<br>CORD DRIVE RUNNER, for slope carrier<br>CHARIOT DE TIRAGE DU CORDON, pour chariot slope<br><br>rechts / right / droite<br>links / left / gauche    | 100 Stck<br>100 pcs<br>100 pcs   |

| Abbildung<br>Illustration<br>Illustration   | Artikelnr.<br>Article No.<br>Code Article | Artikelbezeichnung<br>Designation<br>Désignation  | Packeinheit<br>Packing Unit<br>Conditionnement |
|---|---|---|--|
|    | 3.230 167 000                             | WELLENSTÜTZE mit Magnet<br>SHAFT SUPPORT with magnet<br>SUPPORT D'ARBRE MAGNÉTIQUE  | 100 Stck<br>100 pcs<br>100 pcs                 |
|    | 3.230 024 000                             | WELLENSTÜTZE mit Haftschraube<br>TILT SHAFT SUPPORT with adherence screw<br>SUPPORT D'AXE D'ORIENTATION avec vis adhérente  | 50 Stck<br>50 pcs<br>50 pcs                    |
|   | 3.231 104 000                             | MITTELSTÜTZE<br>CENTER SUPPORT<br>SUPPORT CENTRAL   | 100 Stck<br>100 pcs<br>100 pcs                 |
|  | 3.230 068 000                             | ABSTANDSHALTER EDELSTAHL, für Biegegerät, bis 127 mm<br>LOUVER SPACER FINE STEEL, for bending device, up to 127 mm<br>ÉCARTEUR ACIER INOX, pour outillage de pliage, jusqu'à 127 mm | 1.000 Stck<br>1.000 pcs<br>1.000 pcs           |
|   | 3.230 221 000                             | ABSTANDSHALTER EDELSTAHL, für Slope-Laufwagen 3.230 079<br>LOUVER SPACER FINE STEEL, for slope runner 3.230 079<br>ÉCARTEUR ACIER INOX, pour chariot slope 3.230 079                | 500 Stck<br>500 pcs<br>500 pcs                 |
|  | 3.231                                     | BEDIENEINHEIT<br>OPERATING UNIT<br>UNITÉ DE COMMANDE  | 100 Stck<br>100 pcs<br>100 pcs                 |
|   | -152 000                                  | weiß, Bedienseite rechts<br>white, operating side right<br>blanc, commande droite   |  |
|   | -153 000                                  | weiß, Bedienseite links<br>white, operating side left<br>blanc, commande gauche   |  |
|   | -150 000                                  | grau, Bedienseite rechts<br>grey, operating side right<br>gris, commande droite   |  |
|   | -151 000                                  | grau, Bedienseite links<br>grey, operating side left<br>gris, commande gauche   |  |

| Abbildung<br>Illustration<br>Illustration   | Artikelnr.<br>Article No.<br>Code Article                 | Artikelbezeichnung<br>Designation<br>Désignation  | Packeinheit<br>Packing Unit<br>Conditionnement |
|---|---|---|--|
|    | 3.233<br><br>-201 001<br>-202 001<br>-201 010<br>-202 010 | ENDKAPPEN-SET, AS/NS, Compact<br>END CAP SET, OPERATING / NON-OPERATING END, Compact<br>JEU D'EMBOUS, CÔTÉ COMMANDE / NON-COMMANDE, Compact<br><br>rechts-weiß / right-white / droite-blanc<br>links-weiß / left-white / gauche-blanc<br>rechts-grau / right-grey / droite-gris<br>links-grau / left-grey / gauche-gris | 250 Satz<br>250 sets<br>250 jeux               |
|    | 3.233<br><br>-303 001<br>-303 010<br>-304 001<br>-304 010 | SLOPE ENDKAPPEN-SET, Compact<br>SLOPE END CAP SET, Compact<br>JEU D'EMBOUS SLOPE, Compact<br><br>rechts-weiß / right-white / droite-blanc<br>rechts-grau / right-grey / droite-gris<br>links-weiß / left-white / gauche-blanc<br>links-grau / left-grey / gauche-gris   | 50 Satz<br>50 sets<br>50 jeux                  |
|  | 3.233 300 000   | SCHRAUBEN-SET FÜR SLOPE-ENDKAPPEN-SET<br>Compact und Omega<br>SCREW SET FOR SLOPE ENDCAP SET<br>Compact and Omega<br>JEU DE VIS POUR JEU D'EMBOUS SLOPE<br>Compact et Omega   | 50 Satz<br>50 sets<br>50 jeux                  |
|  | 3.230 205 000   | SCHNURSTOPP für Slope-Anlagen<br>CORDSTOP for slope units<br>ÂRRET DE CORDON pour slope   | 10 Stck<br>10 pcs<br>10 pcs                    |
|  | 3.230<br><br>-188 000<br>-199 000                         | LAMELLENHALTER, Kunststoff, weiß<br>SLAT HOLDER, plastic, white<br>SUPPORT LAMELLES, plastique, blanc<br><br>127 mm<br>90 mm  | 1.000 Stck<br>1.000 pcs<br>1.000 pcs           |
|  | 3.002 000 121   | BLINDNIETE für Magnetwellenstütze 3x5 mm<br>COUNTERSUNK BLIND RIVET for magnet shaft support 3x5 mm<br>RIVET AVEUGLE À TÊTE CONIQUE pour support d'arbre magnétique 3x5 mm  | 1.000 Stck<br>1.000 pcs<br>1.000 pcs           |